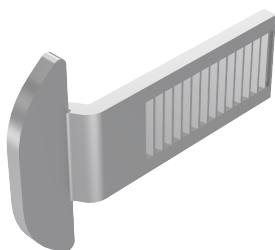


LINGUETA CONCHA S38/4,5 INV 7000 (TRA011)



CARACTERÍSTICAS

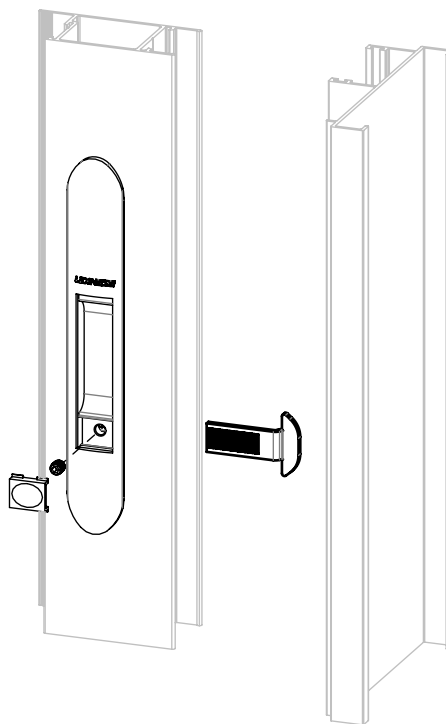
CODIFICAÇÃO			
COR	CÓDIGO	CATÁLOGO	SISTEMISTA
INX	9207270	LINCONS38IN7000	TRA011

OBSERVAÇÕES

COMPOSIÇÃO/CARACTERÍSTICAS:

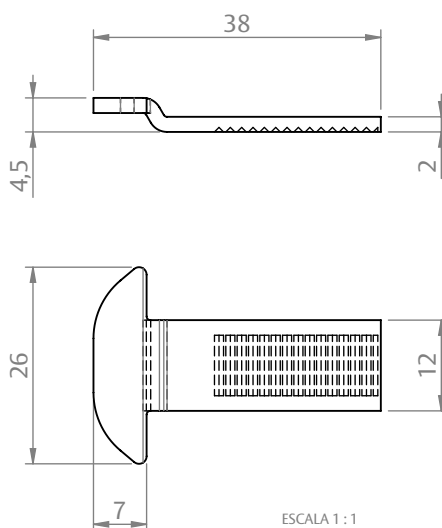
- LINGUETA: AÇO INOX;

APLICAÇÃO

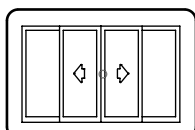


SEM ESCALA

DIMENSÕES



PORTA E JANELA
DE CORRER

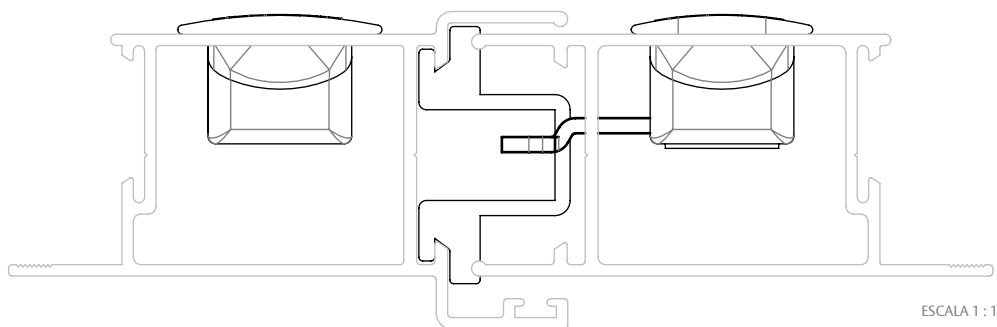


UDINESE
ASSA ABLOY

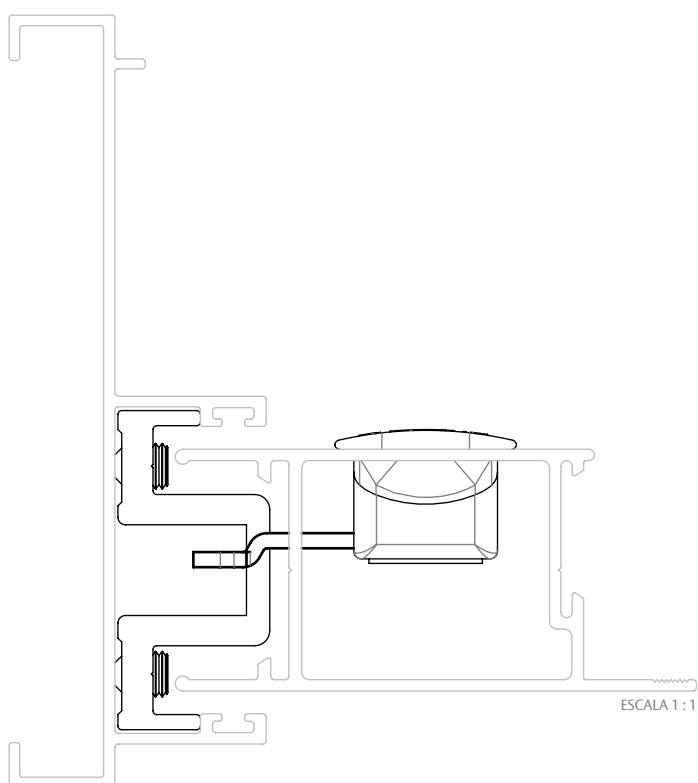
LINGUETA CONCHA S38/4,5 INV 7000 (TRA011)

APLICAÇÕES (HYDRO & CIA)

FECHAMENTO CENTRAL (GOLD)



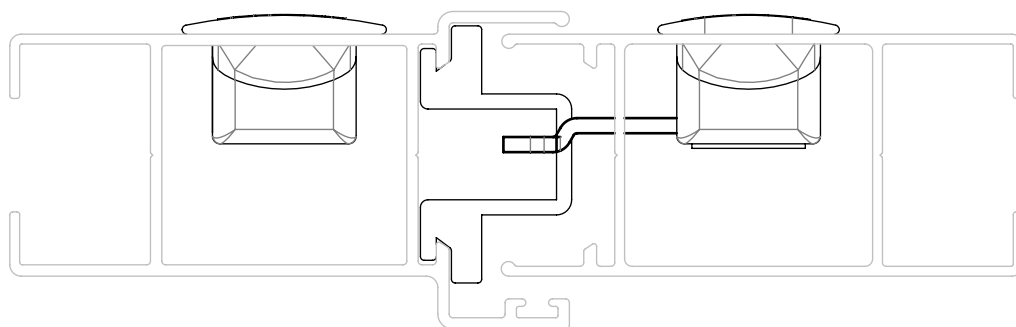
FECHAMENTO LATERAL (GOLD)



LINGUETA CONCHA S38/4,5 INV 7000 (TRA011)

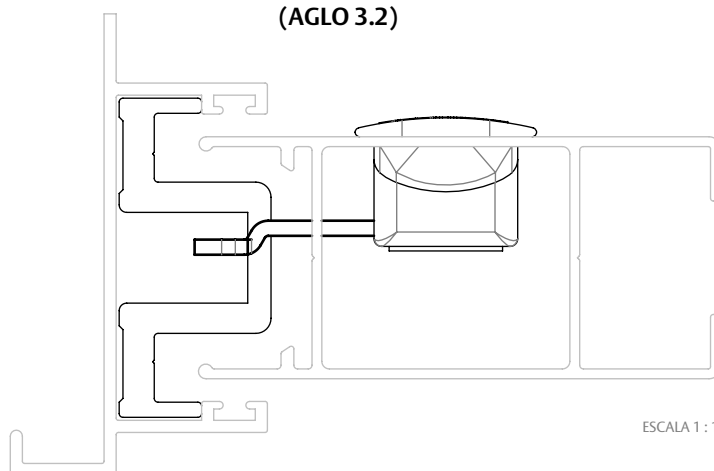
APLICAÇÕES (OLGA COLOR)

FECHAMENTO CENTRAL (AGLO 3.2)



ESCALA 1 : 1

FECHAMENTO LATERAL (AGLO 3.2)

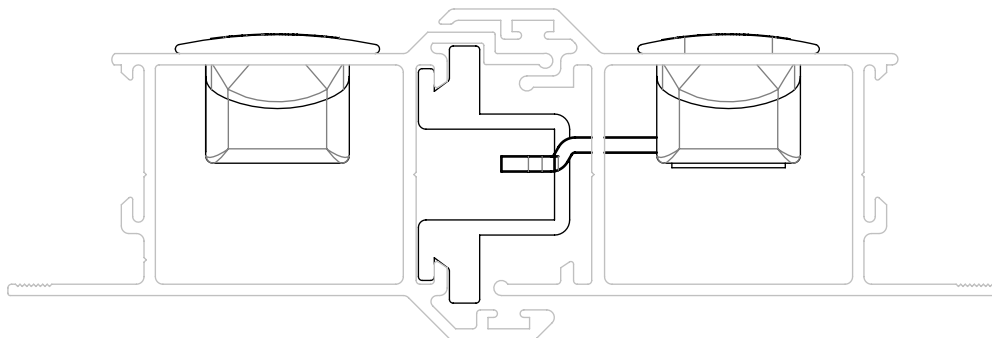


ESCALA 1 : 1

LINGUETA CONCHA S38/4,5 INV 7000 (TRA011)

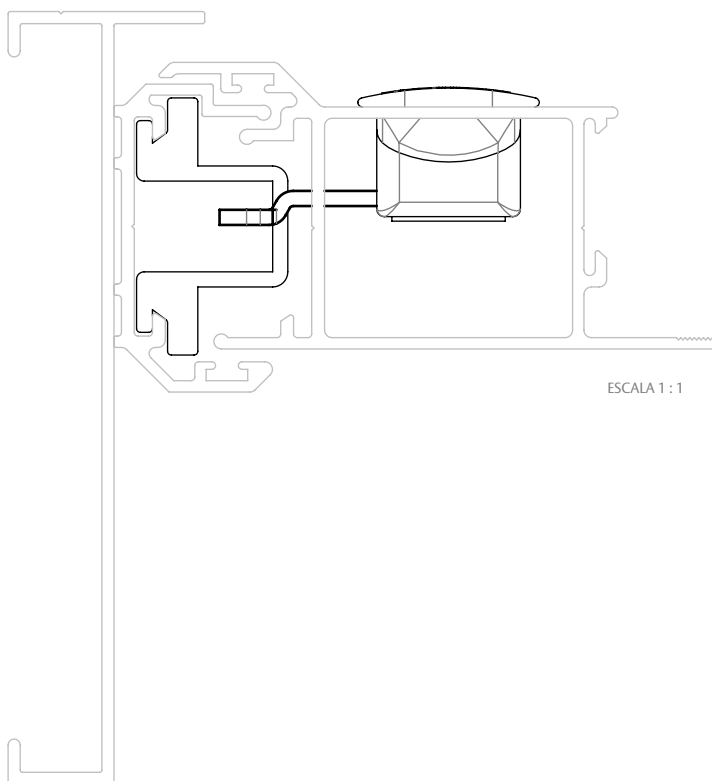
APLICAÇÕES (CDA ALUMIGON)

FECHAMENTO CENTRAL (D'ORO)



ESCALA 1 : 1

FECHAMENTO LATERAL (D'ORO)



ESCALA 1 : 1

LINGUETA CONCHA S38/4,5 INV 7000 (TRA011)

APLICAÇÕES (ASA ALUMÍNIO)

FECHAMENTO CENTRAL
(D'ORO)

