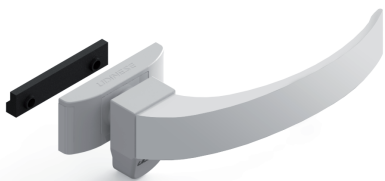


FECHO MAX-AR 725 SUP/LUN/IMP2.5 S/CTF

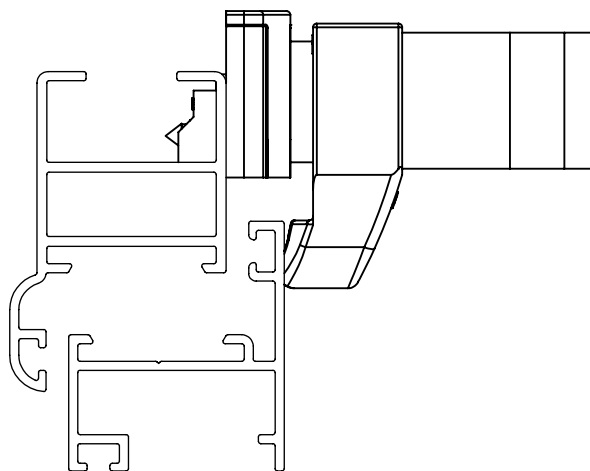


CARACTERÍSTICAS

EMBALAGEM		
COMPONENTES	M. PRIMA	QTDE
Fecho Max-Ar 725	Alumínio	1
Capa da base	Polímero	1
Contra placa	Polímero	1
Paraf. A4,2X13 ch/ph	INOX	2

CODIFICAÇÃO		
COR	CÓDIGO	CATÁLOGO
BCO	9210471	FEC725DFRSLISCTFBCO
BP3	9210472	FEC725DFRSLISCTFBP3
PRA	9210473	FEC725DFRSLISCTFPRA
PTF	9210474	FEC725DFRSLISCTFPTF

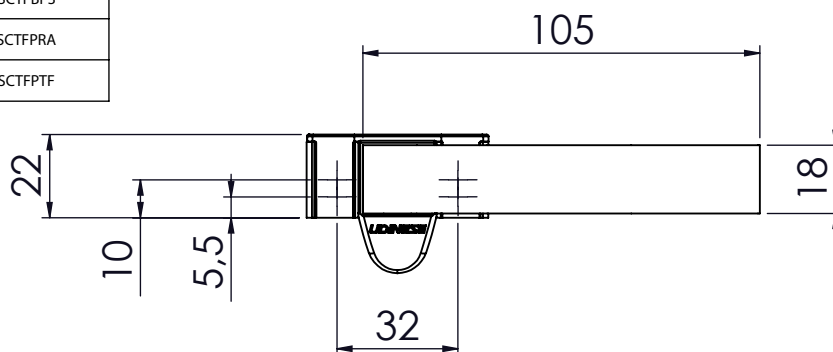
APLICAÇÃO



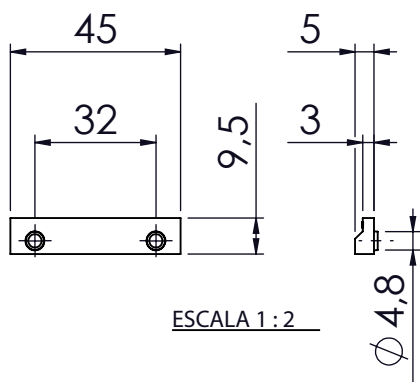
ESCALA 1:1

DIMENSÕES

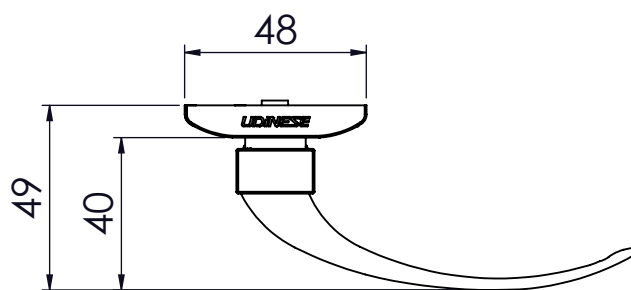
FECHO MAX-AR 725 S/CTF



CONTRA PLACA

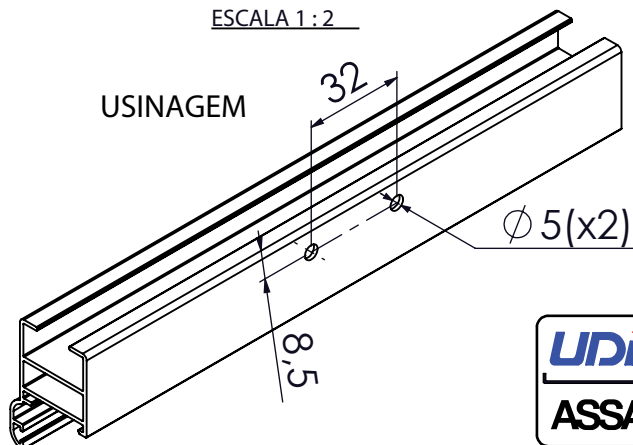


ESCALA 1:2

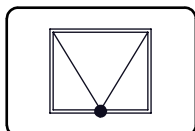


ESCALA 1:2

USINAGEM



MAXIM-AR
IMPERIAL 2.5



UDINESE
ASSA ABLOY